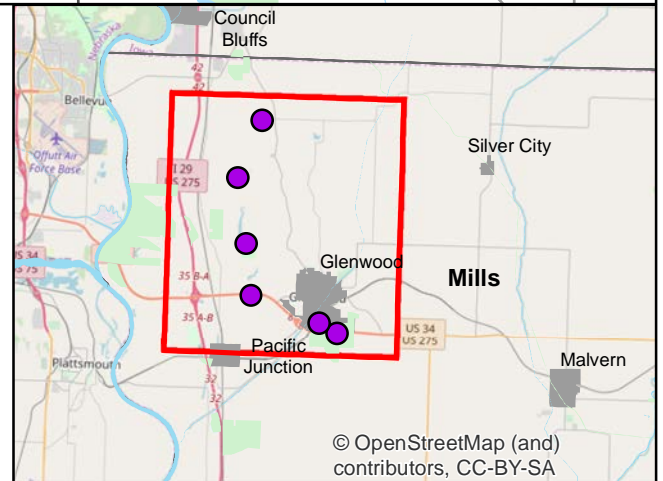
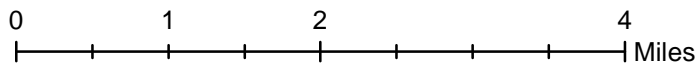
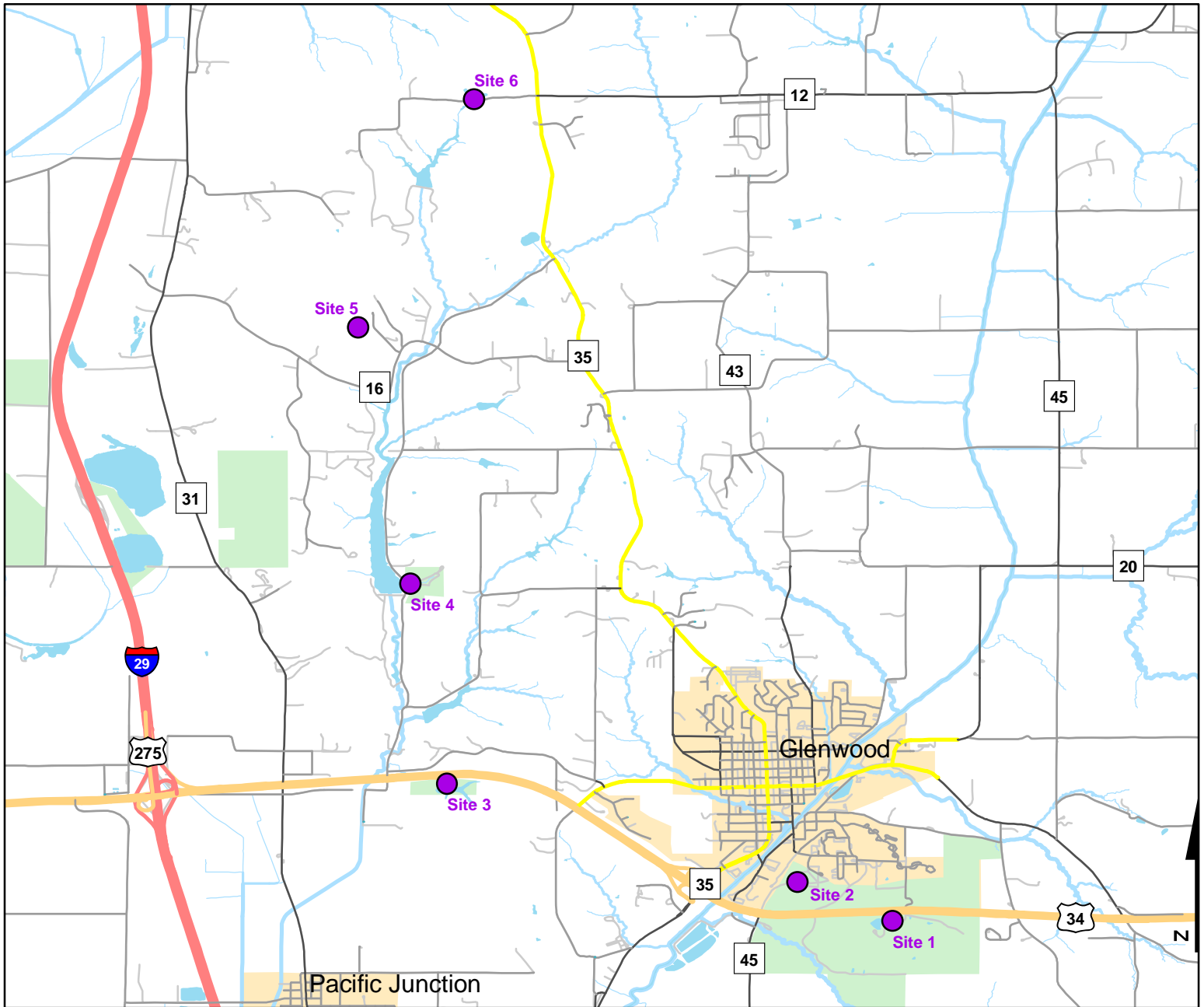




Volunteer Wildlife Monitoring Program (VWMP) Frog and Toad Survey

Route ID: 26 County: Mills

Click for Google Maps to Site 1: <https://www.google.com/maps/dir/?api=1&destination=41.0297700612,-95.7294052768>



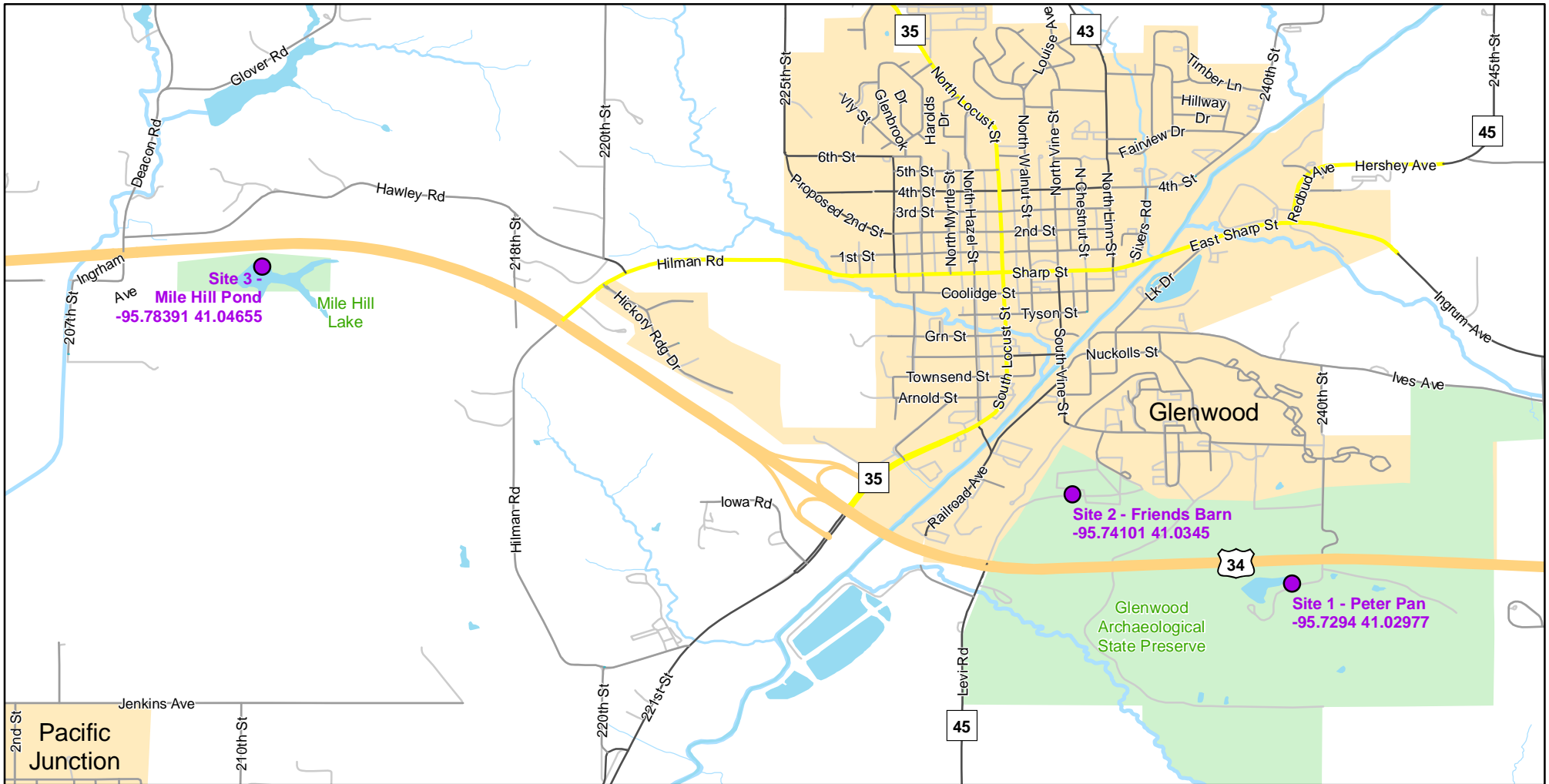
© OpenStreetMap (and contributors), CC-BY-SA



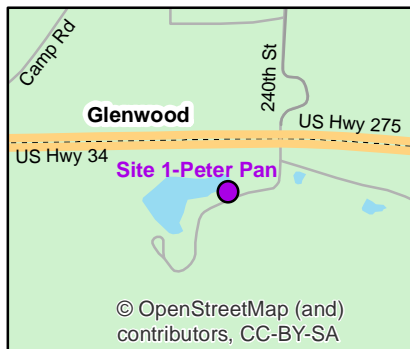
Volunteer Wildlife Monitoring Program (VWMP) Frog

Route ID: 26 County: Mills

Click for Google Maps to Site 1: <https://www.google.com/maps/dir/?api=1&destination=41.0297700612,-95.7294052768>

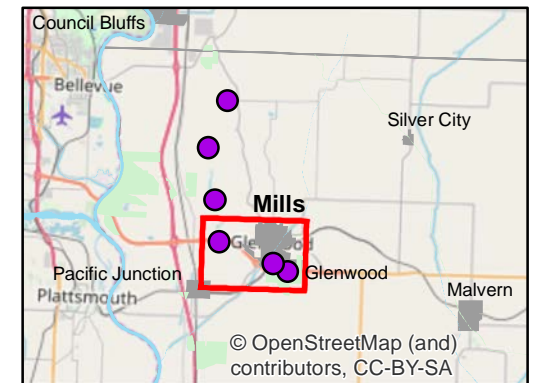
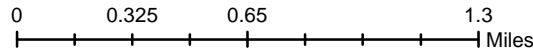


Enlarged View of Site 1



Legend

----- Trails

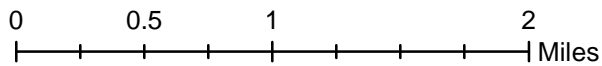
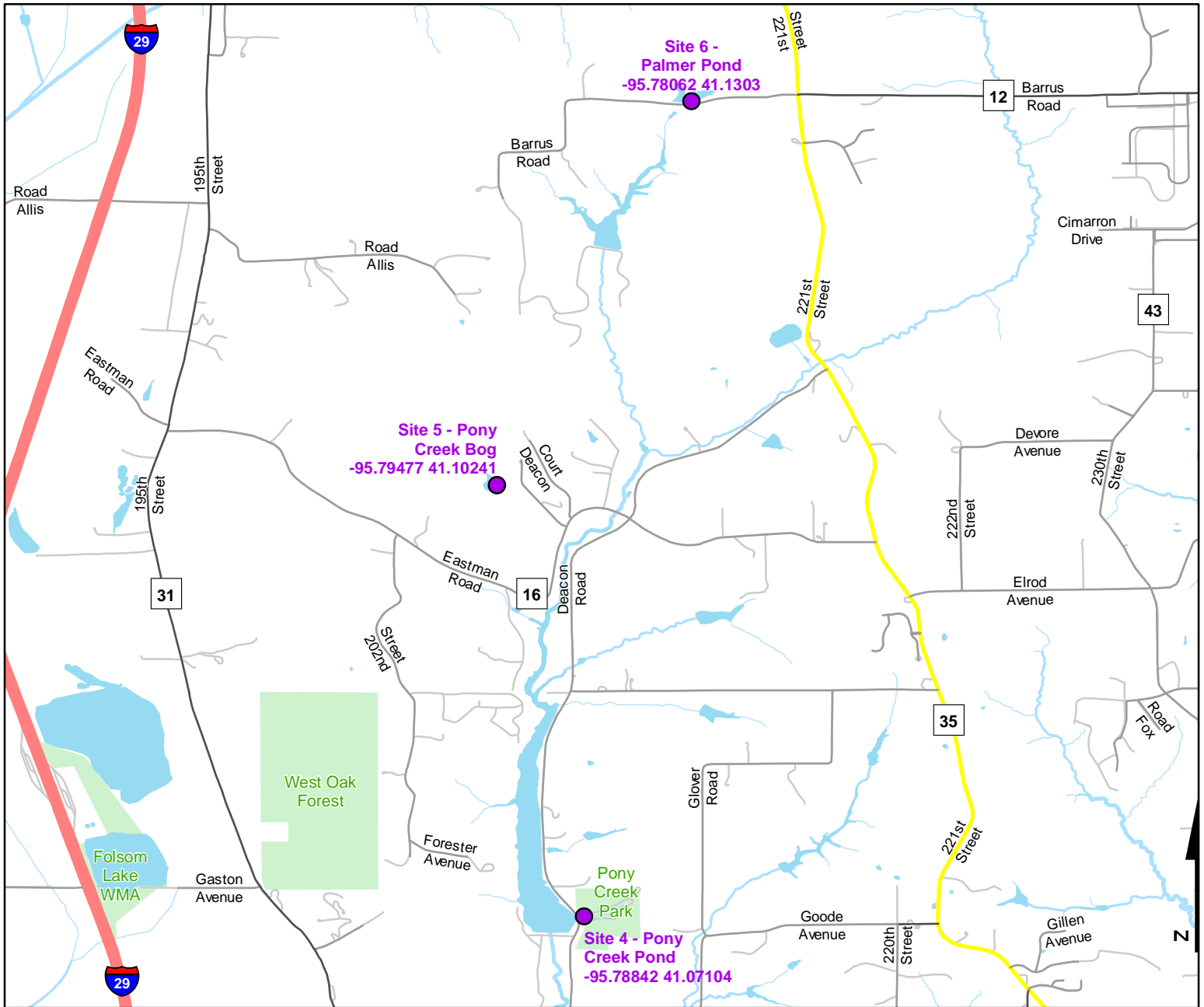




Volunteer Wildlife Monitoring Program (VWMP) Frog and Toad Survey

Route ID: 26 County: Mills

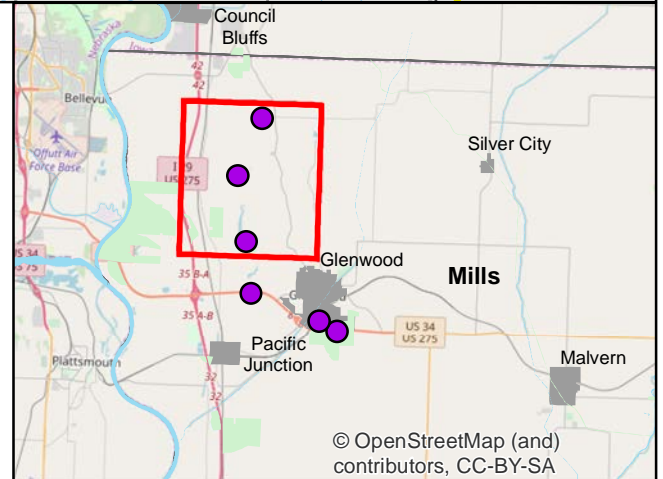
Click for Google Maps to Site 1: <https://www.google.com/maps/dir/?api=1&destination=41.0297700612,-95.7294052768>



DNR
Volunteer Wildlife Monitoring Program

Legend

----- Trails



© OpenStreetMap (and contributors), CC-BY-SA



Frog and Toad Call Survey Route Description

Route ID **26**

Established: 1991

Site Number	Name	County	Latitude	Longitude	Directions
1	Peter Pan	Mills	41.0297701	-95.7294053	North east corner of pond
2	Friends Barn	Mills	41.0345023	-95.7410079	On Glen St. Hospital School Campus 100 yards south of Friends Barn. Stood at south end of terrace.
3	Mile Hill Pond	Mills	41.0465509	-95.7839085	11 acre pond mostly wooded. Just south of Hwy 34 at mile marker 6, 2.1 miles west of Hwy 385. Listening point NW corner of pond.
4	Pony Creek Pond	Mills	41.0710391	-95.7884172	1.7 mile North of Hwy 34 on gravel road. Pond is on east side of road across from Dam of Pony Creek Lake. Pond is on North side of driveway heading into campground area.
5	Pony Creek Bog	Mills	41.1024083	-95.7947693	4.3 mile north of Highway 34 (0.3 mile north of intersection by spillway)
6	Palmer Pond	Mills	41.130302	-95.7806229	At hwy 275 and County road H12, go west 0.4 mile pond on north side of this dead end gravel road. SW corner of pond.